

A close-up photograph of a young child with short, straight red hair and bright blue eyes. The child is smiling slightly and looking towards the camera. The background is softly blurred, showing other children in a nursery setting. The image is framed by colorful geometric shapes in shades of purple, teal, and pink.

A GUIDE TO NURSERY FUNDING



WESTHILL CORNER
DAY NURSERY



CONTENTS:

pg. 02:
Introduction

pg. 03:
What's available

pg. 04:
Making the most of
your funded hours

pg. 06:
Targeted 2-year-old
funding

pg. 09:
3 & 4-year-old
universal funding

pg. 11:
9+ month-old funding
for working parents

pg. 14:
Your childcare costs
with funding

YOUR COMPLETE GUIDE TO NURSERY FUNDING



If this is your first time accessing nursery care for your child, then you might not be aware of the funding available that will help reduce the cost of childcare.

Here in this guide, we explain exactly how much funding is available, if you are entitled to claim for funding, and how this funding can support you financially.

So, without further ado, let's take a look at how it all works.

The information in this guide is correct at the time of publication and follows the current Government funding guidelines. Funding entitlements and eligibility criteria may change, so we'll always keep you informed of any updates.



UNDERSTANDING WHAT FUNDING OPTIONS ARE AVAILABLE

Right now, there are three funding options available:

15 hours
Targeted 2-year-old
funding

15 hours
3 & 4-year-old
universal funding

30 hours
9+ month-old funding
for working parents

If you are eligible for any of the above funding entitlements, you can claim up to a maximum of 15 or 30 hours of funding per week over the academic terms (Spring, Summer, and Autumn).



MAKING THE MOST OF YOUR FUNDED HOURS

Government funding is designed to support families with childcare costs during the school term, which covers 38 weeks per year. However, because our nurseries are open for 51 weeks each year, we offer a *stretched funding* option. This means your funded hours are spread across the whole year, helping to reduce your monthly childcare bill while giving you access to all-year-round care.

If you need more hours than your funding provides, we can offer additional sessions to suit your needs. Early education funding is paid to the nursery based on the maximum number of funded hours in each term, as shown in the table provided below:

	Autumn 2025	Spring 2026	Summer 2026	Annual Total
Term time weeks	15	11	12	
Stretched weeks	17	13	22	
	Maximum number of funded hours in each term:			
15 hours for children aged 2+ receiving additional support	225	165	180	570
15 hours for all 3 & 4-year-olds	225	165	180	570
30 hours childcare for eligible working families (9+ months)	450	330	360	1140



The example price grids further along on this guide give you a clear idea of what you can expect to pay each month with your funding stretched over the year. These examples are based on our minimum booking patterns, which apply regardless of funding. You'll also see what your monthly cost would be if you choose to book extra sessions beyond the funded entitlement.

Please note: Government funding does not cover the cost of meals. Meals are charged separately at £8.00 per funded day and covers breakfast, lunch, dinner, and snacks. We have included this in the example prices shown. We also offer a small number of *term-time only* places for families using 15 hours for children aged 2 years receiving additional support or 15 hours for all 3 & 4-year-olds. These places follow the school term dates and are only available 38 weeks per year. Term-time only places don't include childcare during the holidays, and may still incur some costs if you wish the nursery to provide meals for your child. Additionally, these term-time only places are offered on a first-come, first-served basis, so please speak to your Nursery Manager if you're interested in this option. All places, whether funded or not, are subject to our Admissions Policy. For more information about how we allocate places, please refer to this policy, which is available from the nursery team or on request.

Additional Sources of Funding:

Early Years Pupil Premium (EYPP)

EYPP is additional funding provided to early years settings to support your child's learning and development. It's available for children aged 3 and 4 who are accessing funded early education and meet certain eligibility criteria (for example, if their parent is in receipt of certain benefits). The funding is paid directly to the nursery and is used to enhance your child's education experience. Parents do not need to apply separately for EYPP. Instead, eligibility is checked when the funding declaration form is completed. The nursery will guide you through this as part of the enrolment or re-confirmation process.

Disability Access Fund (DAF)

DAF is a one-off annual payment made to the nursery if a 3 or 4-year-old child in their care is in receipt of Disability Living Allowance (DLA). This funding helps the setting to make reasonable adjustments and support access to early years education for children with disabilities. This funding is paid directly to the nursery. If your child receives DLA, please inform the nursery and provide evidence of the allowance so that they can claim the funding on your behalf.



NEXT PAGE





15 HOURS FOR CHILDREN AGED 2 YEARS RECEIVING ADDITIONAL SUPPORT

Parents in receipt of government support may be entitled to 15 hours of funded childcare for children aged 2+ years.

The funded hours are provided across 38 weeks during the term time, but we allow parents to 'stretch' these hours so that they help reduce the cost of a place over 51 weeks, providing you with all-year-round care. If you need more hours than the funding provides, we can offer that, too.

To be eligible for 15 hours per week for children aged 2+ years, you should be in receipt

of one of the following:

- Income Support
- Income-Based Job Seekers' Allowance
- Income-Related Employment and Support Allowance
- Child Tax Credit or Working Tax Credit (if your annual household income is less than £16,190)
- Guaranteed Element of State Pension Credit
- Support under Part VI of the Immigration and Asylum Act (1999)
- Universal Credit (if your annual net earned income is less than £15,400)

Or, if your child:

- Is looked after by the Local Authority
- Has left care through Special Guardianship or an Adoption or Residence Order



- Has a current Statement of Special Educational Needs (SEN) or an Education, Health and Care Plan
- Qualifies for Disability Living Allowance

Please visit [beststartinlife.gov.uk](https://www.beststartinlife.gov.uk) to learn more about the eligibility criteria.

WHEN AND HOW TO APPLY FOR 15 HOURS FOR CHILDREN AGED 2 YEARS RECEIVING ADDITIONAL SUPPORT

If you meet the eligibility criteria, you can apply for a funded place the term after your child turns 2 years old, as shown in the table below:

Your Child's Birthday	When You Can Claim
1st January to 31st March	The term beginning on or after 1st April
1st April to 31st August	The term beginning on or after 1st September
1st September to 31st December	The term beginning on or after 1st January

To apply, you'll need to complete an application through the **Local Authority**.

Once successful, you'll receive a confirmation code, which we will need to see before we can apply the funding to your child's place.

We recommend **applying at least one month before the term you want your child to start** to allow enough time for everything to be processed.

Before you can use your funding at Tommies Childcare, you must confirm your eligibility for funding by completing this



assessment form:

- [Funding Eligibility Assessment](#)

Once your eligibility has been verified by your Nursery Manager, your details will be uploaded by us to a platform known as 'Funding Loop'. Funding Loop is an online platform that makes completing the relevant Local Authority forms far easier. When we add your information to Funding Loop, you'll receive an email from the platform inviting you to register for the platform. You must do this as this gives us permission to claim your funding from the Local Authority. Failure to do this will result in funding not being claimed and, therefore, not applied to your booking pattern. .

[You can read more about Funding Loop here.](#)

If your circumstances change and you're no longer eligible for funded childcare, a short grace period may apply. This means your funding might continue for a period of time to give you a chance to re-qualify or make alternative arrangements. We'll talk you through this process if it ever applies to you.



NEXT PAGE





15 HOURS FOR ALL 3 & 4-YEAR-OLDS

All parents are entitled to claim 15 hours of funded childcare for children aged 3 & 4-years-old.

There are no eligibility requirements for this funding model. Your child simply needs to be aged 3 or 4-years-old.

The funded hours are provided across 38 weeks during the term time, but we allow parents to 'stretch' these hours so that they help to reduce the cost of a place over 51 weeks. If you need more hours than the funding provides, we can offer that, too.

WHEN AND HOW TO APPLY FOR 15 HOURS FOR ALL 3 & 4-YEAR-OLDS

You can access this funding the term after your child turns 3-years-old, as shown in the table below:

Your Child's Birthday	When You Can Claim
1st January to 31st March	The term beginning on or after 1st April
1st April to 31st August	The term beginning on or after 1st September
1st September to 31st December	The term beginning on or after 1st January



Before you can use your funding at Tommies Childcare, you must confirm your eligibility for funding by completing this assessment form:

- [Funding Eligibility Assessment](#)

Once your eligibility has been verified by your Nursery Manager, your details will be uploaded by us to a platform known as 'Funding Loop'. Funding Loop is an online platform that makes completing the relevant Local Authority forms far easier. When we add your information to Funding Loop, you'll receive an email from the platform inviting you to register for the platform. You must do this as this gives us permission to claim your funding from the Local Authority. Failure to do this will result in funding not being claimed and, therefore, not applied to your booking pattern. .

[You can read more about Funding Loop here.](#)

If your circumstances change and you're no longer eligible for funded childcare, a short grace period may apply. This means your funding might continue for a period of time to give you a chance to re-qualify or make alternative arrangements. We'll talk you through this process if it ever applies to you.



NEXT PAGE





30 HOURS CHILDCARE FOR ELIGIBLE WORKING FAMILIES

Working parents of children aged 9+ months may be entitled to claim up to 30 hours of funded childcare per week.

The funded hours are provided across 38 weeks during the term time, but we allow parents to 'stretch' these hours so that they help reduce the cost of a place over 51 weeks, providing you with all-year-round care.

If you need more hours than the funding provides, we can offer that, too.

To be eligible for 30 hours per week for children aged 9+ months, you should be:

- A two-parent family, both working and each earning the equivalent of 16 hours per week paid at the National Living Wage
- Each earning less than £100,000 per year

Or

- A single parent, working and earning the equivalent of 16 hours per week paid at the National Living Wage
- Earning less than £100,000 per year

HOW AND WHEN TO APPLY FOR 30 HOURS FOR CHILDREN AGED 9+ MONTHS

If you meet the eligibility criteria, you can access this funding the term after your child turns **9 months old**, as shown in the



table below:

If your child turns 9+ months between:	You can claim funding from:
1st January to 31st March	The term beginning on or after 1st April
1st April to 31st August	The term beginning on or after 1st September
1st September to 31st December	The term beginning on or after 1st January

To apply, visit beststartinlife.gov.uk and create a childcare account through HMRC.

Once your application is successful, you'll receive an **11-digit code**, which you must give to us to reserve your place. To share your funding code with us, please complete this form:

- [Funding Eligibility Assessment](#)

Once your funding code has been shared with and verified by your Nursery Manager, your details will be uploaded by us to a platform known as 'Funding Loop'. Funding Loop is an online platform that makes completing the relevant Local Authority forms far easier. When we add your information to Funding Loop, you'll receive an email from the platform inviting you to register for the platform. You must do this as this gives us permission to claim your funding from the Local Authority. Failure to do this will result in funding not being claimed and, therefore, not applied to your booking pattern.

[You can read more about Funding Loop here.](#)

If your circumstances change and you're no longer eligible for funded childcare, a short grace period may apply. This means your funding might continue for a period of time to give you a chance to re-qualify or make alternative arrangements. We'll



talk you through this process if it ever applies to you.

Please note, you also need to renew your code every three months.

It can take time for your funding code to come through, so we strongly advise parents to apply for their codes ahead of time while keeping in mind the various cut-off dates that apply, depending on when you'd be looking to claim for your funding entitlement.

Please refer to the table below for more information:

Recommended time to apply for your eligibility code	Last date to apply for your eligibility code
15th October to 30th November	by 31st December to receive funding from 1st January
15th January to 28th February	by 31st March to receive funding from 1st April
15th June to 31st July	by 31st August to receive funding from 1st September



NEXT PAGE





YOUR CHILDCARE COSTS WITH FUNDING

MONTHLY COSTS FOR 15 HOURS FOR CHILDREN AGED 2 YEARS RECEIVING ADDITIONAL SUPPORT

Full Days	2	£354.02
	3	£660.02
	4	£966.02
	5	£1,221.83

How Your Funded Hours Are Used

- Each full day session includes 7.5 hours of funding (up to your full entitlement)

When your full entitlement of 15 funded hours are stretched over 51 weeks, you are effectively using 11.18 hours per week.



NEXT PAGE

15

costs for 15 hours for all 3 & 4-year-olds



YOUR CHILDCARE COSTS WITH FUNDING

MONTHLY COSTS FOR 15 HOURS FOR ALL CHILDREN AGED 3 & 4-YEARS OLD

		Half Days (Morning, 7.30am - 1.00pm)					
		0	1	2	3	4	5
Full Days	0					£427.85	£593.60
	1			£372.21	£537.96	£703.71	
	2	£342.08	£507.83	£673.58	£839.33		
	3	£635.33	£801.08	£966.83			
	4	£928.58	£1,094.33				
	5	£1,171.68					

		Half Days (Afternoon, 1.00pm - 6.00pm)					
		0	1	2	3	4	5
Full Days	0					£379.27	£536.52
	1			£350.41	£507.66	£664.91	
	2	£342.08	£499.33	£656.58	£813.83		
	3	£635.33	£792.58	£949.83			
	4	£928.58	£1,085.83				
	5	£1,171.68					

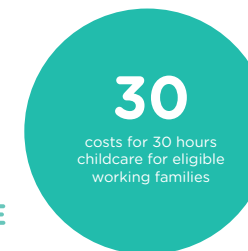
How Your Funded Hours Are Used

- Each full day session includes 7.5 hours of funding (up to your full entitlement)
- Each half day session includes 3.75 hours (up to your full entitlement)

When your full entitlement of 15 funded hours are stretched over 51 weeks, you are effectively using 11.18 hours per week.



NEXT PAGE





YOUR CHILDCARE COSTS WITH FUNDING

MONTHLY COSTS FOR 30 HOURS CHILDCARE FOR ELIGIBLE WORKING FAMILIES

(Pricing below is for children aged 9 months - 3 years, please see overleaf for pricing for children aged 3+ years)

Full Days	2	£245.73
	3	£368.60
	4	£674.60
	5	£943.97

How Your Funded Hours Are Used

- Each full day session includes 7.5 hours of funding (up to your full entitlement)

When your full entitlement of 30 funded hours are stretched over 51 weeks, you are effectively using 22.35 hours per week.



YOUR CHILDCARE COSTS WITH FUNDING

MONTHLY COSTS FOR 30 HOURS CHILDCARE FOR ELIGIBLE WORKING FAMILIES

(Pricing below is for children aged 3+ years)

		Half Days (Morning, 7.30am - 1.00pm)		
		0	1	2
Full Days	3	£357.47	£523.22	£688.97
	4	£650.72	£816.47	
	5	£907.37		

		Half Days (Afternoon, 1.00pm - 6.00pm)		
		0	1	2
Full Days	3	£357.47	£514.72	£671.97
	4	£650.72	£807.97	
	5	£907.37		

How Your Funded Hours Are Used

- Each full day session includes 7.5 hours of funding (up to your full entitlement)
- Each half day session includes 3.75 hours (up to your full entitlement)

When your full entitlement of 30 funded hours are stretched over 51 weeks, you are effectively using 22.35 hours per week.

WESTHILL CORNER DAY NURSERY

Westhill Corner Day Nursery & Pre-school, 1 Westhill Road,
Coventry, CV6 2AD

tommieschildcare.co.uk

t. 02476 591767

e. westhillcorner@tommieschildcare.co.uk
